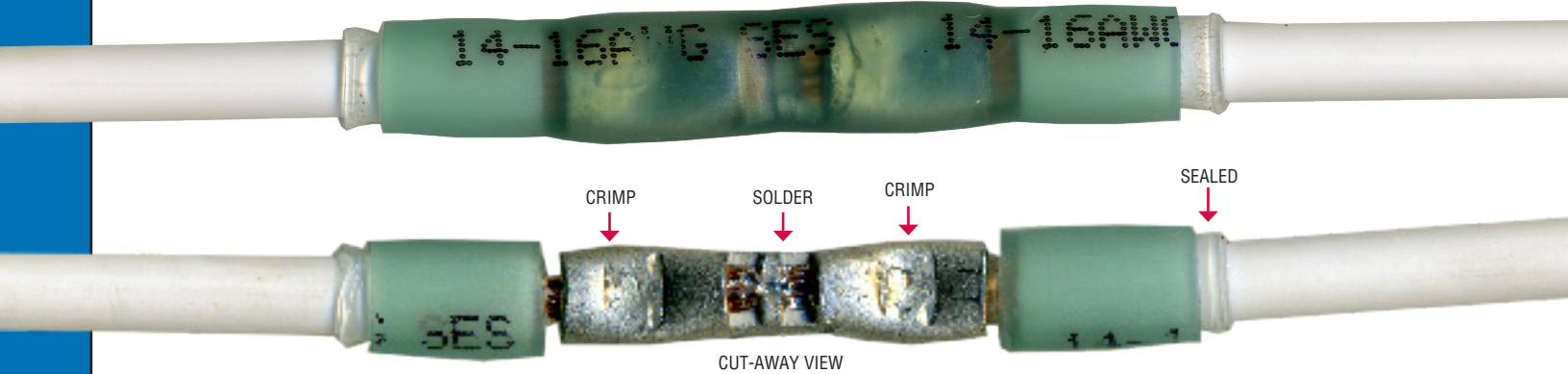


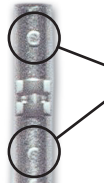
SEALED CRIMP & SOLDER CONNECTORS

Sealed Crimp & Solder Connectors are crimped for mechanical reliability, soldered for superior strength and conductivity, and sealed for maximum durability. When there is no margin for error, choose SEALED CRIMP & SOLDER CONNECTORS...**THE ULTIMATE CONNECTOR.**

THE ULTIMATE ELECTRICAL CONNECTION!



THE COMPONENTS



Crimp indicators show where to crimp and on which side of the barrel the window is located.

THE CRIMP CONNECTOR

- Seamless butt connectors for superior crimp performance
- Window in butt connectors allows for solder to flow
- Butt connectors have crimp indicators where the installation tool should be positioned to crimp the connector
- Wire-stop in butt connector prevents over-insertion of wire
- Where possible, terminals have brazed seams to deliver a superior mechanical termination



THE SOLDER

- Flux coating to clean metal surfaces
- Pre-measured solder to provide the right amount of solder to ensure a solid termination
- Low-temp solder alloy for ease of installation



THE HEAT SHRINK TUBING

- Adhesive-lined polyolefin to seal the connection
- Color-coded with wire gauge imprint for easy wire size identification
- Translucent tubing to allow for visual inspection

Features & Benefits

- Crimped for mechanical reliability
- Soldered for superior strength & conductivity
- Sealed for maximum durability
- Sealed Crimp & Solder Connectors meet or exceed the most stringent OEM standards.

