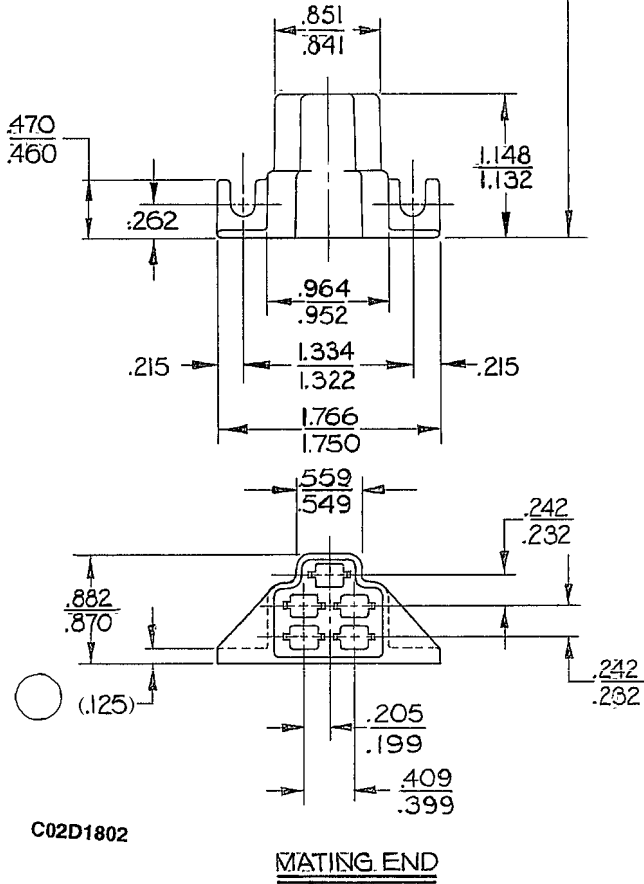


PACKARD ELECTRIC DIVISION
GENERAL MOTORS CORPORATION
WARREN, OHIO

DEB-A
199
DRD-V
165

THIS DRAWING AND DESIGN HEREON CONSTITUTE A PROPRIETARY DESIGN OF PACKARD ELECTRIC DIVISION AND IS NOT TO BE DUPLICATED OR REPRODUCED WITHOUT AUTHORITY OF PACKARD ELECTRIC DIVISION

ASM. DIMENSIONING POINT



C02D1802

MATING END

PART NO. **3138080**

DATE	SYM	REVISION RECORD	C/N NO.
12-8-67	A	OUTLINE DWG ISSUED	29893
6-25-73	00	MATL. SPEC. REVISED	49146
13NO.79	-	MATL. COLOR WAS GRAY	71334
29AP80	-	DRAWING & CONTROL	
		TRANSFERRED TO	
		PACKARD ELECTRIC	73018
100CB5	-	ADDED CODE NO. 6901	85004
28JA09	E1	DIM (.125) WAS .125	407221

CODE NO. 6900 6901	TOLERANCE UNLESS OTHERWISE SPECIFIED DECIMAL ± .005 FRACTIONAL ± ANGULAR ±
DWG. DATE 12-26-67	SCALE NONE
ROUTING DEPT. OUTST.	DR. T.N. RITZ CK. <i>M. J. Moran</i> 2-16-68 APPR.
REFERENCE	APPR. <i>Subert 2-26</i>
MATERIAL SPEC. 3138080 "D" SIZE	CODE NO.
FILLED POLYPROPYLENE-BLK.	
NAME CONN BODY-5 WAY MALE-56 SERIES	
PART NO. 3138080	SIZE A
OUTLINE DRAWING	